

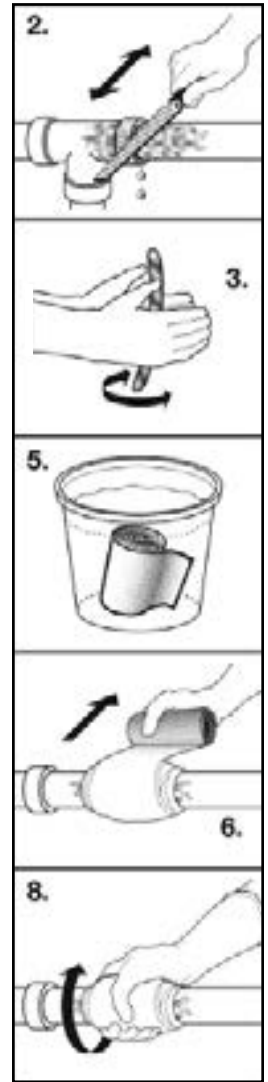
Shelf Life:

Two years if stored at 40°-83°F, and aluminum packet is not punctured. Storage at higher than recommended temperatures can reduce shelf life. Do not use if product is hardened. Rotate stock for best results.

DIRECTIONS FOR USE:

Read all directions before applying. Hardening process begins once foil pouch is opened. Use entire roll for each repair. Larger diameter pipe may require additional rolls.

1. Turn off pressure to leaking pipe. If pipe is rusty, clean.
2. Roughen pipe surface using a file for metal pipes and/or sandpaper for PVC pipe (Quick Seal adheres best to rough surfaces).
3. Plug the leak with putty. For repairs on refrigerant lines it is important to use the enclosed putty. Activate the putty by kneading it for two minutes then plug the leak. Take care to smooth the putty to be as flush as possible with the pipe. For leaks around joints work the putty into a snake and wrap around the pipe. Again, work the putty into a flush smooth finish. When repairing water lines the use of the putty is not necessary in most cases.
4. Put on Quick Seal's exclusive gloves that are provided for remaining steps before opening foil pouch.
5. Open foil pouch. Dip roll in cool water for 20 seconds, and squeeze 2-3 times to distribute water evenly through roll of tape.
6. Begin wrapping by tightly pulling the tape away from you and around pipe. It is important that the first few rotations be wrapped tightly. Work quickly, winding the wrap over itself with no more than 1/2 inch applied to either side of initial tape width. The completed application must be at least 1/2 inch thick or about 15 layers minimum.
7. Keeping gloves wet with water, rub foaming resin back into weave of Quick Seal fabric.
8. As resin becomes firm, continue rubbing with a twisting and squeezing motion to smooth the tape. Always keep gloves wet. Once resin is completely hard, continue squeezing smoothly for 1-2 minutes for best results. A slight exothermic (heat) occurs.
9. Allow a minimum 30 minutes to cure. Turn pressure back on to pipe. If misapplied, Quick Seal can be removed with saw or shears. Use isopropyl alcohol or acetone to remove resin from skin or clothes.



Selection Guide

Number 2'x4' Rolls				Number 4'x12' Rolls			
Normal Pipe Size	50 PSI	150 PSI	450 PSI	Normal Pipe Size	50 PSI	150 PSI	450 PSI
1/2"	1	1	1	1"	1	1	1
3/4"	1	1	1	1-1/2"	1	1	1
1"	1	1	2*	2"	1	1	1
1-1/4"	1	2*	3*	2-1/2"	1	1	2*
1-1/2"	2*	2*	3*	3"	1	2*	2*
				4"	1	2*	3*

*2'x3' Quick Seal should be used in multiple roll applications

*4'x12' Quick Seal should be used in multiple roll applications

Read and understand the product's label and Safety Data Sheet ("SDS") for precautionary and first aid information. The SDS is available on the Nu-Calgon website at www.nucalgon.com or is returnable by U.S. Mail upon request.

